



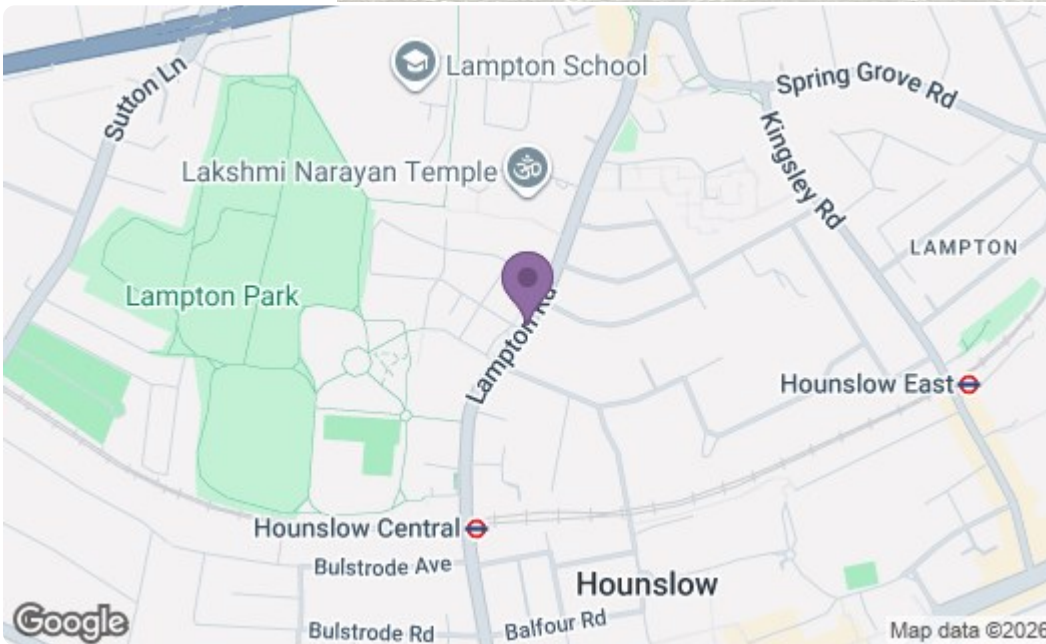
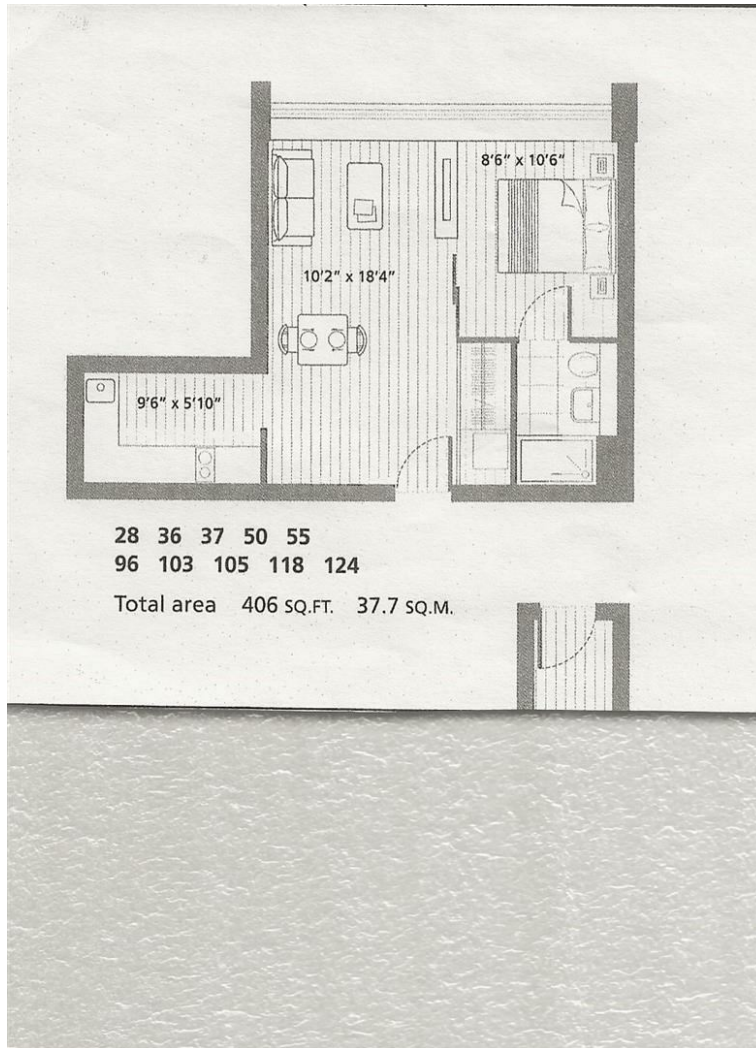
Central House, Lampton Road, Hounslow, TW3 1HY
£1,250 PCM

A well presented and larger-than-average second-floor studio apartment (406 sq ft), overlooking the communal gardens and ideally located close to Hounslow town centre, Hounslow Central Underground station, and excellent transport links. The accommodation comprises a spacious studio room featuring a built-in LG Smart TV, a separate modern kitchen with integrated appliances including a dishwasher, fridge/freezer, microwave, oven, hob, and washing machine, as well as a contemporary shower room. Further benefits include double-glazed windows, electric heating, and a concierge service. Offered furnished and available from 14th August

A partner of
The Guild Of Professional Estate Agents
with a network of over 700 independent estate agents

Associated Office: 121 Park Lane, Mayfair, London W1K 7AG t 020 7318 7075





Energy Efficiency Rating		Current	Potential
Very energy efficient - lower running costs			
(92 plus) A			
(81-91) B			
(69-80) C		74	74
(55-68) D			
(39-54) E			
(21-38) F			
(1-20) G			
Not energy efficient - higher running costs			
England & Wales		EU Directive 2002/91/EC	
Environmental Impact (CO ₂) Rating		Current	Potential
Very environmentally friendly - lower CO ₂ emissions			
(92 plus) A			
(81-91) B			
(69-80) C			
(55-68) D			
(39-54) E			
(21-38) F			
(1-20) G			
Not environmentally friendly - higher CO ₂ emissions			
England & Wales		EU Directive 2002/91/EC	

A partner of
The Guild Of Professional Estate Agents
with a network of over 700 independent estate agents

Associated Office: 121 Park Lane, Mayfair, London W1K 7AG t 020 7318 7075